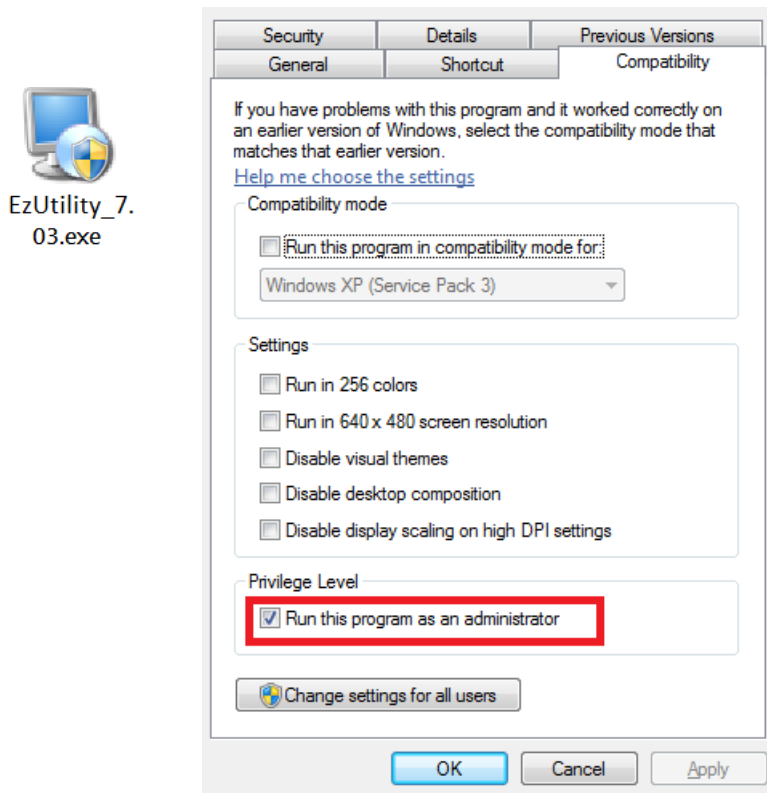


1. Right-click on [EzUtility\\_7.03.exe](#) and tick 'Run this program as an administrator' in the pop-up menu. Complete the installation by double-clicking on the [EzUtility\\_7.03.exe](#).



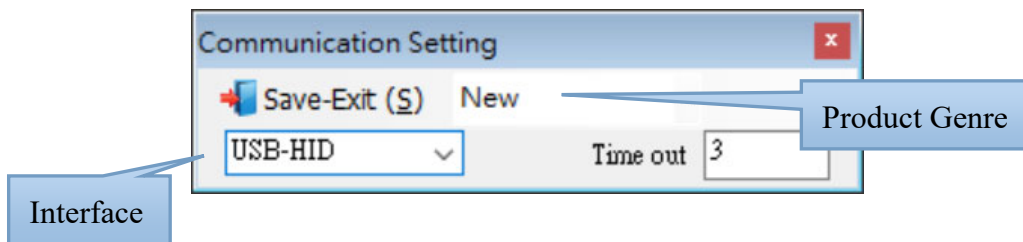
2. After successful installation, please also right-click on the shortcut icon of [Ez Utility](#) on the desktop and tick 'Run this program as an administrator' in the pop-up menu.



3. Connect the scanner and the host with USB cable.
4. Scan [\[.C008\\$\]USB-HID](#) below to switch to USB-HID interface.



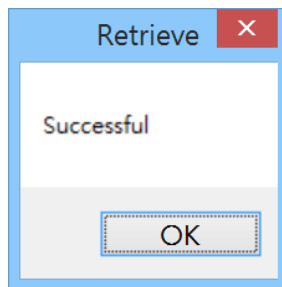
- Run **Ez Utility**, select Product Genre as appropriate (see below Table 1 for details), select “**USB-HID**” as Interface, keep Time out as is, and click [Save-Exit (S)] to continue.



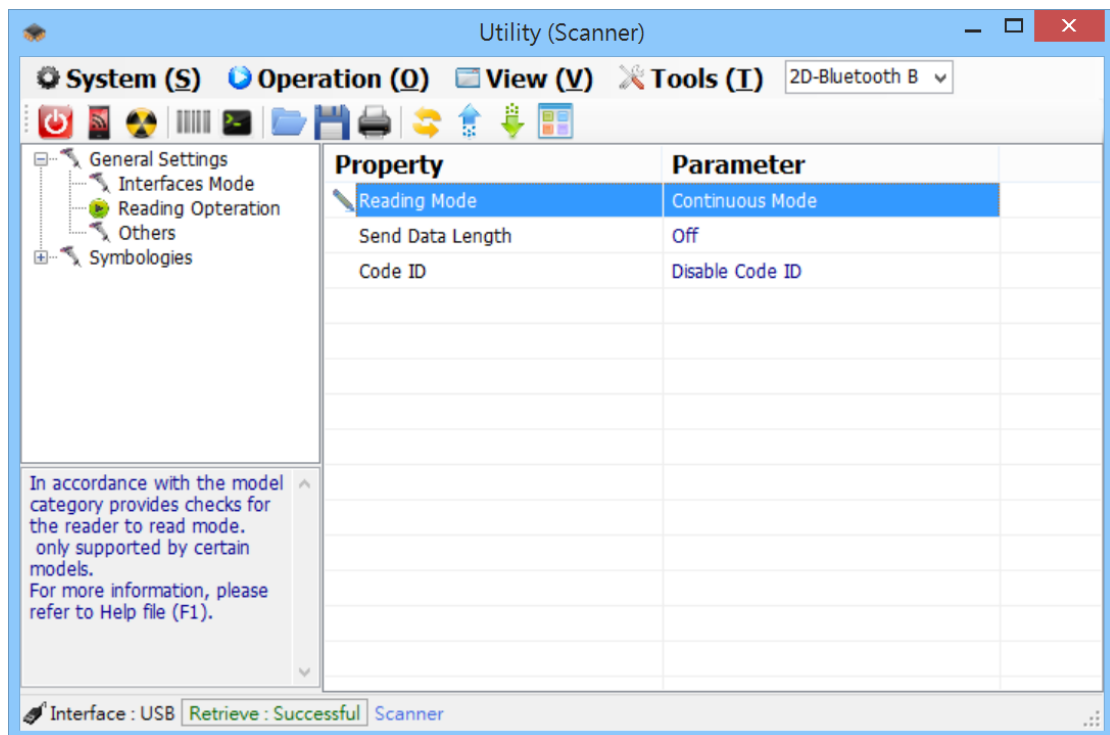
< Table 1: Product Genre & Corresponding Models >

Product Genre	Corresponding Model(s)
General	ES201 (FW: SM3-c-x.xx)
SBR Laser	AS705
Engine	MT10 (FW: SM3-d-x.xx) MT30 (FW: SM3-j-1.xx)
1D-Fixed	AS601
1D-Bluetooth	AS307, AS307M, ES311, AS500 ES301(FW: SM3-c-x.xx.BTA) ES301M(M) (FW: SM3-f-x.xx.BTA.G2.MEM)
2D-Fixed	AS602, AS622
2D-Bluetooth A	AS312
2D-Bluetooth B	AS312 (FW: SM3-h-x.xx.BTA)
2D-Handheld	AS703

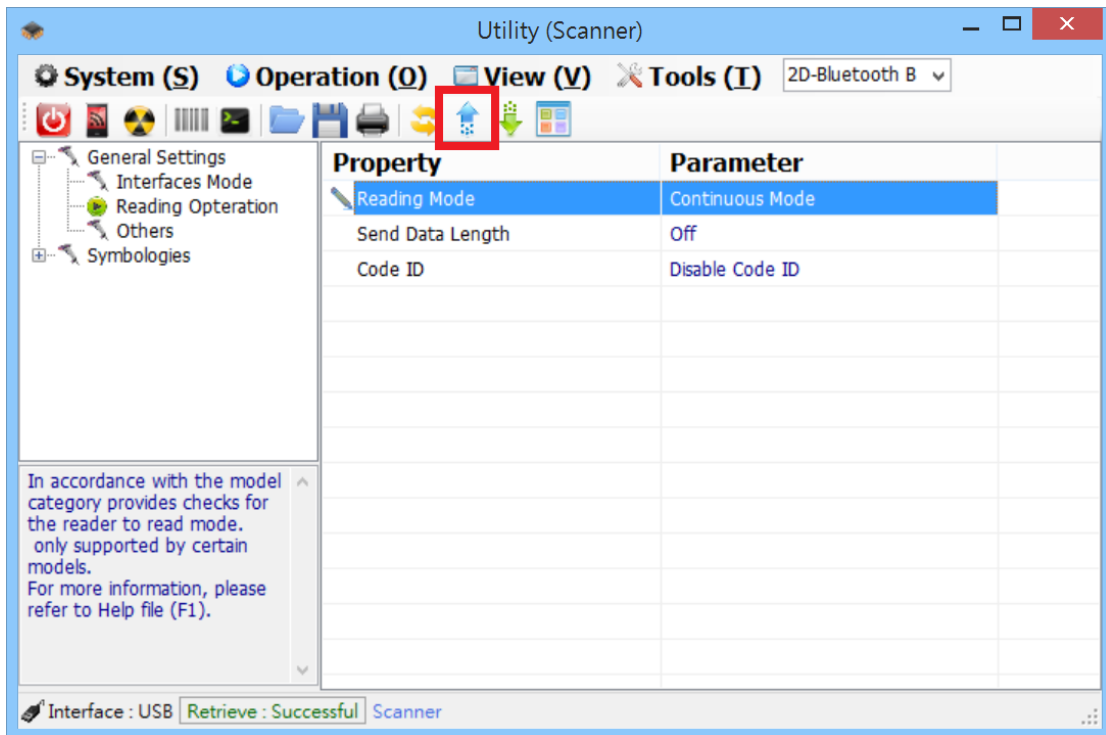
6. The program will automatically retrieve configuration from the scanner. If the retrieval is successful, you will see below dialog.



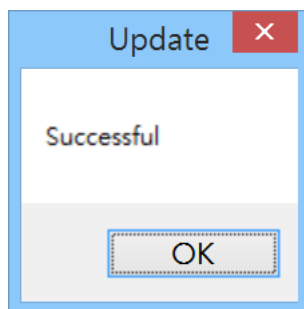
7. Double click on parameters and select the desired option from the drop-down menu to make changes. Below is an example.



8. Click the Upward Arrow on the Toolbar to upload configuration to the scanner.



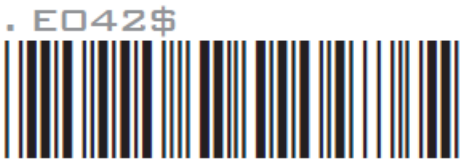
9. Below dialog indicates that your edited configuration is successfully uploaded to the scanner. Now you may disconnect cable from the scanner.



10. Scan one of the configuration barcodes below to reset the scanner back to the desired interface:



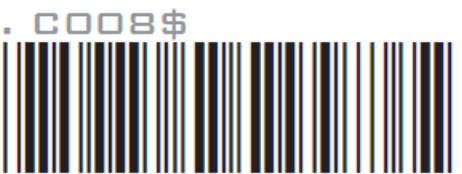
**BT HID**



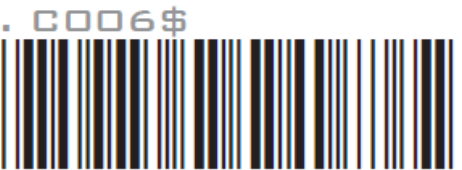
BT SPP



Memory Mode



USB HID



USB VCP